



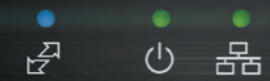
AXIENT® DIGITAL

INTEGRITY

YOU CAN HEAR.

SHURE AD610

AXIENT DIGITAL
ShowLink Access Point



M6

SHURE

AD4Q

A 470-636 MHz

AXIENT DIGITAL
Wireless Receiver

1

2

SYNC

SYNC

SHURE

See shure.com/axientdigital

© 2019 Shure Incorporated.
SHURE and the SHURE logotype are registered trademarks of Shure Incorporated or Shure Acquisition Holdings, Inc. For additional information, see shure.com/trademarks
05/2019 AL20018SE



**IT'S A COMPLEX WORLD
FOR WIRELESS MICROPHONES.**

The RF environment is ever-changing —
jammed with TV transmissions, mobile devices,
and other wireless equipment.

And it's becoming more congested
and unpredictable every day.

**AXIENT® DIGITAL
MAKES IT PERFECTLY CLEAR.**

Incorporating the most innovative wireless audio technology
in the world, Axient Digital was engineered from the ground up
for professional productions that demand flawless execution.

With an unprecedented level of signal stability and audio clarity,
plus flexible hardware options, advanced connectivity, and
comprehensive control, it's a wireless system built to take on
the challenges of today — and tomorrow.

AXIENT® DIGITAL
ONE SYSTEM.
POWERFUL
POSSIBILITIES.

With two transmitter series to choose from — both compatible with a shared receiver platform — Axient Digital is a scalable wireless system that provides incomparable sound for a wide range of applications and settings.

AD Series Transmitters
ACCESSIBLE
PERFORMANCE.

Offering a variety of core benefits including high-performance RF, digital audio, and networking, the AD series represents the new standard in professional wireless. Powered by either AA or SB900A rechargeable batteries, these transmitters fit easily into existing workflows.



ADX Series Transmitters
TRANSFORMATIONAL
TECHNOLOGY.

Critical applications call for the enhanced features of the ADX series. With form factors that include a frequency diversity handheld and the first micro bodypack with an internal self-tuning antenna, these ShowLink®-enabled transmitters offer real-time remote control plus automatic interference detection and avoidance.

RF PROTECTION

RELIABILITY IS IN THE AIR.

With outstanding signal quality in even the most complex, congested environments, Axient® Digital ensures maximum stability, range, and clarity for uncompromising audio — anywhere, every time.

Next-Gen Digital Radio + Channel Quality Metering

A high-performance modulation scheme provides maximum signal stability. The 5-segment Channel Quality meter allows for real-time analysis of RF signal-to-noise, enabling operating range assessments and visibility into potential interference.

True Digital Diversity

Mounting a better defense against multipath, fading events, and other RF anomalies, Axient Digital combines two discrete RF signals per receiver channel using a quality-based maximal-ratio-combining algorithm.

Quadversity™

By assigning four antenna inputs to a single channel via patented technology, Quadversity™ can provide extended coverage and the option for separate zones, plus added resistance against multipath interference and RF noise.

Wide Tuning Receivers and Transmitters

An expansive tuning bandwidth of up to 184MHz across all receivers and transmitters supplies broad strategic spectrum coverage, while simplifying inventories for both sellers and operators.

Spectral Efficiency

A robust High Density transmission mode increases system channel count dramatically — with up to 47 active channels per 6-Mhz TV band (63 channels/8MHz) — all while maintaining exceptional audio quality.

Operating Range

Selectable transmission modes and power levels enable optimum range and audio quality, with analogtype resilience, artifact-free muting, and fast signal recovery at end of range.

Frequency Diversity

Signal quality is maximized by transmitting two identical signals on independent frequencies. If the active signal degrades, the other takes over automatically. With the ADX2FD handheld transmitter, Axient Digital monitors and combines the transmissions for a flawless audio signal.

Interference Detection and Avoidance

With real-time monitoring via the AXT600 Spectrum Manager, sound engineers can neutralize RF interference by manually switching the signal to a clear backup frequency, or by programming the system to do it automatically.

AUDIO QUALITY
**HEAR NOTHING
BUT QUALITY.**

Axient® Digital defies limitations for both RF and audio quality. With industry-leading low latency, transparent frequency response, and wide dynamic range, nothing gets in the way of true, pure sound. No matter the setting, it's Shure audio quality you can count on.

Ultra-low Latency

An impressive 2 milliseconds from microphone transducer to analog output guarantees seamless, cohesive sound.*

**Latency is mode dependent. High Density mode latency is 2.9 ms.*

Transparent Sound

A flat frequency response over a wide range from 20Hz to 20kHz provides accurate audio reproduction.

Digital Outputs

Dante™ and AES67 digital audio transmits via a configurable 4-port switch for combined control / audio or separate streams with redundancy. AES3 output provides an additional option for pristine digital audio.

Encryption

An Advanced Encryption Standard (AES) 256-bit encrypted signal ensures that every transmission is secure and unbreachable.

Dynamic Range

Wide dynamic range of >120 dB yields impressive signal-to-noise performance and accurate transient response.

COMMAND AND CONTROL

SEE THROUGH THE NOISE.

ShowLink® remote control, Wireless Workbench®, the ShurePlus™ Channels app, and networked battery monitoring provide unmatched control and insight, for seamless performance.

Wireless Workbench and the ShurePlus Channels App

Wireless Workbench offers total control — with an enhanced interface, access to advanced RF spectrum and Timeline plotting, frequency coordination, and live performance monitoring. Control and monitor capabilities can also be extended to a mobile device with the ShurePlus Channels iOS app.

ShowLink Remote Control

ADX transmitters with ShowLink give engineers comprehensive real-time remote control of all transmitter parameters using a robust 2.4GHz diversity wireless connection, so settings can be changed right from the control booth.

Dante™ Cue und Dante™ Browse

With the push of a button, Dante Cue enables monitoring of every Axient Digital channel on the network through a single headphone output. Plus, Dante Browse offers high-fidelity monitoring of any Dante-enabled device on the network.

Networked Charging

Smart, high-performance batteries and chargers provide detailed visibility and remote monitoring of critical parameters such as remaining runtime in hours and minutes and charging status.

RECEIVERS

SCALABLE.

One receiver platform is the gateway to the full range of features, from high-performance RF and transparent digital audio, to software control. With Quadversity™, the AD4Q can assign four antennas to a single channel for greater coverage and signal quality.

AD4D Two-Channel Receiver

AD4Q Four-Channel Receiver

- Compatible with all AD and ADX transmitters
- Wide tuning range up to 184MHz
- True digital diversity reception per channel for drop-out resistance
- Networked control with Wireless Workbench® and ShurePlus™ Channels app
- Quadversity™ mode for extended antenna coverage and improved RF signal-to-noise (AD4Q only)
- DC module version available to support redundant power



Front panel headphone jack enables Dante Cue and Dante Browse monitoring

Channel Quality meter displays RF signal-to-noise

Configurable Ethernet switch for redundant Dante or AES67 digital output

Locking AC connectors

AES3 output

Front panel headphone jack enables Dante Cue and Dante Browse monitoring

Channel Quality meter displays RF signal-to-noise

Configurable Ethernet switch for redundant Dante or AES67 digital output

Locking AC connectors

Switchable XLR/AES3 outputs

Cascade antenna ports can be switched to Quadversity inputs

AD SERIES TRANSMITTERS ACCESSIBLE.

AD series handheld and bodypack transmitters put professional-quality wireless digital audio within reach, with breakthrough RF performance and wide tuning up to 184MHz.

AD1 Bodypack Transmitter

- Two transmission modes:
- Standard for optimal coverage
- New High Density mode for maximum system channel count and robust coverage
- Encryption-enabled, secure transmission
- External contacts for docked charging
- AA or SB900A Li-ion rechargeable batteries

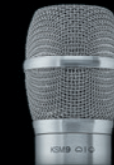


AD2 Handheld Transmitter

- Two transmission modes:
- Standard for optimal coverage
- New High Density mode for maximum system channel count and robust coverage
- Encryption-enabled, secure transmission
- Frequency and power lockout
- Rugged metal construction in Black or Nickel finish
- External contacts for docked charging
- AA or SB900A Li-ion rechargeable batteries



Also available with these Shure microphone cartridges



KSM9, KSM9HS
(in Black or Nickel)



BETA® 87A, BETA® 87C



BETA® 58A



SM58®



VP68

ADX SERIES TRANSMITTER

TRANSFORMATIONAL.

All ADX transmitters set the stage for exceptional performance, with wide tuning up to 184MHz, interference protection, advanced rechargeability, streamlined design, and ShowLink® remote control for real-time parameter adjustments right from the booth.

BREAKTHROUGH DESIGN

ADX1M

Micro Bodypack Transmitter

- Small and streamlined design for better concealment and wear
- Internal adaptive antenna optimizes signal when ADX1M is worn against the body
- Ultem® PEI construction for heat resistance and durability
- Detachable belt clip
- Sealed buttons and LEMO connection protect against sweat and moisture ingress
- SB910M rechargeable batteries provide up to 7 hours of runtime
- Diversity ShowLink-enabled for remote transmitter control and automatic interference avoidance



ADX1

Bodypack Transmitter

- Slim, light design with powerful features
- Advanced control menu, removable antenna, fully concealed buttons and switch
- Durable, moisture resistant, lightweight metal case
- SB910 rechargeable batteries for up to 10 hours of runtime
- External contacts for docked charging
- Diversity ShowLink-enabled for remote transmitter control and automatic interference avoidance



ADX2

Handheld Transmitter

- Sleek design with powerful features
- Durable, moisture-resistant, lightweight metal case, available in Black or Nickel finish
- SB920 rechargeable batteries for up to 9 hours of runtime
- External contacts for docked charging, with optional fully-covered radome
- Diversity ShowLink-enabled for remote transmitter control and automatic interference avoidance



KSM8
Black

ADX2FD

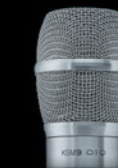
Frequency Diversity Handheld Transmitter

- Able to transmit RF signal on two discrete carriers
- Optional 50mW high-power mode drives a single frequency with increased power
- Durable, moisture-resistant, lightweight metal case, available in Black or Nickel finish
- Up to 6.5 hours of runtime with SB920 rechargeable batteries when transmitting on two RF carriers (up to 9 hours battery life when transmitting on a single RF carrier)
- External contacts for docked charging, with optional fully-covered radome
- Diversity ShowLink-enabled for remote transmitter control and automatic interference avoidance



KSM8
Nickel

Also available with these Shure microphone cartridges



KSM9, KSM9HS
(in Black or Nickel)



BETA® 87A, BETA® 87C



BETA® 58A



SM58®



VP68

SYSTEM MANAGEMENT POWERFUL.

Axient® Digital offers unprecedented remote control and monitoring for easy coordination of clean, useable frequencies no matter what kind of RF environment you face.



AXT600

Spectrum Manager

- Single rack unit delivers wide-band UHF spectrum scanning and analysis, plus compatible frequency coordination
- Scans and analyzes the global UHF spectrum (470-952 MHz) in approximately one minute
- Continuously monitors, evaluates, and displays backup frequencies in real time
- Is compatible with Axient Digital and other Shure networked wireless systems

AD610

Diversity ShowLink® Access Point

- Wireless network connectivity between all linked transmitters and receivers
- Enables real-time wireless remote control of up to 24 transmitters per access point
- ShowLink offers ability to adjust gain, change frequencies, mute signals, and more
- True diversity antenna scheme maintains a robust link in the 2.4GHz frequency range
- Automatic channel selection scans the 2.4GHz range for the best channel
- Automatic frequency agility moves the network to the best available channel if signal degrades
- Is compatible with Axient Digital ADX series and Axient analog systems



Additional Accessories

- Battery sleds
- Radome covers
- Locking power cords
- Talk switches

BATTERIES RECHARGEABLE.

A range of networked battery solutions for AD and ADX transmitters includes the rack-mounted SBRC and a series of units that support individual and docked charging.



SBRC

Rackmount Charging Station

- Accommodates eight Li-ion batteries in a single rack space
- Front-panel display for battery parameters including time-to-full in hours and minutes and percent-of-capacity
- Remote monitoring via Shure Wireless Workbench®

- SBC-AX Charging module for SB900A (AD1 and AD2)
- SBM910 Charging module for SB910 (ADX1)
- SBM920 Charging module for SB920 (ADX2 and ADX2FD)
- SBM910M Charging module for SB910M (ADX1M micro bodypack)



SBC200

2-bay dock charger

- SB900A batteries (AD1 and AD2)



SBC220

2-bay dock charger

- SB900A batteries (AD1 and AD2)
- Remote monitoring via Shure Wireless Workbench



SBC240

2-bay dock charger

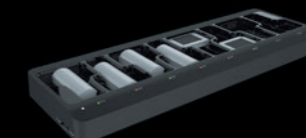
- SB910 batteries (ADX1)
- SB920 batteries (ADX2 and ADX2FD)
- Remote monitoring via Shure Wireless Workbench



SBC800

8-bay dock charger

- SB900A batteries (AD1 and AD2)



SBC840

8-bay dock charger

- SB910 batteries (ADX1)
- SB920 batteries (ADX2 and ADX2FD)
- Remote monitoring via Shure Wireless Workbench



SBC840M

8-bay dock charger

- SB910M batteries (ADX1M micro bodypack)
- Remote monitoring via Shure Wireless Workbench